


FISHWAY STATUS REPORT

Date: 12/12/2015
 Inspection Period: 12/6/2015 thru 12/12/2015

All JD Fishways are inspected twice per day during fish season, 1 March - 30 November.
 One inspection per day during the winter maintenance season, 1 December - 28 February.
 Frequent monitoring of the PLC displays in SMF Fisheries Office as necessary.



**US Army Corps
of Engineers**
Portland District

JOHN DAY DAM

JD/WC Project-Fisheries
 P.O. Box 823
 Rufus, Oregon 97050
 Phone: 541-506-7860

John Day Dam	Inspections	Criteria	Total Number of Inspections:	Temperature:
	Out of Criteria	Limit	9	45 F
NORTH FISHWAY			OOS for winter maintenance since 12/1. ETR is the week of 12/28/15.	
Exit differential	0	≤ 0.5'		
Exit Control weirs	0	High setting	High setting is normal for JDN	
Count station differential	0	≤ 0.3'		
Weir crest depth (DS gauge)	0	1.0' ± 0.1'		
Entrance differential	0	1.0' - 2.0'	AVG	oos
SOUTH FISHWAY			3 AWS Turbines in regular service since 2/28/15	
Exit differential	0	≤ 0.5'		
Exit Control weirs	0	mid setting	return to mid setting 12-2-2015 due to forebay decreasing to < 265.0'	
Count station differential	0	≤ 0.3'		
Weir crest depth (US gauge)	0	1.0' ± 0.1'		
South entrance differential	0	1.0' - 2.0'	AVG	1.6
Entrance weir SE1	0	depth (≥ 8')	AVG	9.0
Collection channel velocity	0	1.5 - 4 fps	AVG	3.04
N. Entrance PH(Bay 19)differential	0	1.0' - 2.0'	AVG	1.2
Entrance weir NE1	0	depth (≥ 8')	AVG	8.1
Entrance weir NE2	1	depth (≥ 8')	AVG	8.1 7.9 ' on 12/10 due to slow PLC control; corrected manually
JUVENILE PASSAGE			SMF successfully dewatered on 11/24. JBS in service until 12/16 as required by FPP.	
Forebay/bypass conduit differential	0	4.0' - 5.0'	AVG	4.6
Submersible traveling screens	0	visual inspect	The end of season' STSs removal starting on 12/16.	
Turbine trashrack drawdown	0	<1.5', wkly	MU trashracks' raking as necessary per the differentials	
Vert barrier screen drawdown	0	<1.5', wkly		
Spill volume	0	Bay2 &1.6K	Spill season ended on 9/1.	
Spill pattern	0	per FPP		
Turbine Unit Priority	0	per FPP		
Turbine 1% Efficiency	0	per FPP		

SMOLT MONITORING FACILITY

Operation:

End of season dewatering completed on 11/24.

SMF will be OOS/ undergoing maintenance until mid March'15. JBS continues in service in its pre-SMF configuration (bypass at Crest Gate.)

Maintenance:

SMF has been winterized by JD Fisheries on 11/15. Only regular PMs will be performed this coming winter as all SMF hardware appears to be in good working order overall. The elevated chute's expansion joints appear to be in good condition, but need the surface epoxy coating.

Research:

None

Fallbacks: AVG: MAX: 0 MIN: 0

OTHER JOHN DAY ISSUES:

Birds :

see the Avian Numbers tab. We report all species and locations, but in reality only gulls in the tailrace BRZ are relevant at JD.

Spillway Avian Line 68 snapped on approx. 10/31. 10 Navlock and Spillway lines are missing out of 125 total at this time.

Lines 25 and 26 have been reinstalled by a contractor by 11/21; the remaining lines have been retensioned under the same contract.

Operations:

JD North fishway was successfully dewatered on 12/1. The following fish were salvaged or pushed to tailrace : 1 adult steelhead and 5 juvenile salmonids, unprecedented 45 to 50 large, 3 to 5 feet sturgeon (very few encountered in the upper section, in the past,) 40 adult lamprey and 2 catfish.

JD North entrance was dewatered/ inspected on 12/7; the grating there continues in mint condition/ rock solid! ETR for JDN is the week of 12/28.

JD South Fishway in regular service with 3 AWS Turbines; it is meeting the optimal FPP criteria. Its annual dewatering is scheduled for 1/11/16.

MU Gatewell Drawdowns: Differentials are checked Wednesdays and Sundays; all gatewells were in criteria.

Maintenance:

JD North Fishway's winter maintenance underway since 12/2. AWS pumps' contractor continues testing and repairing all six units; ETR is 1 March 2016.

Calibration: All gauges/ sensors are within the criteria of 0.3' .

Research:

2015 Adult Fish Counting by Normandeau Associates was completed on 10/31. The counting will commence again on 1 April 2016.

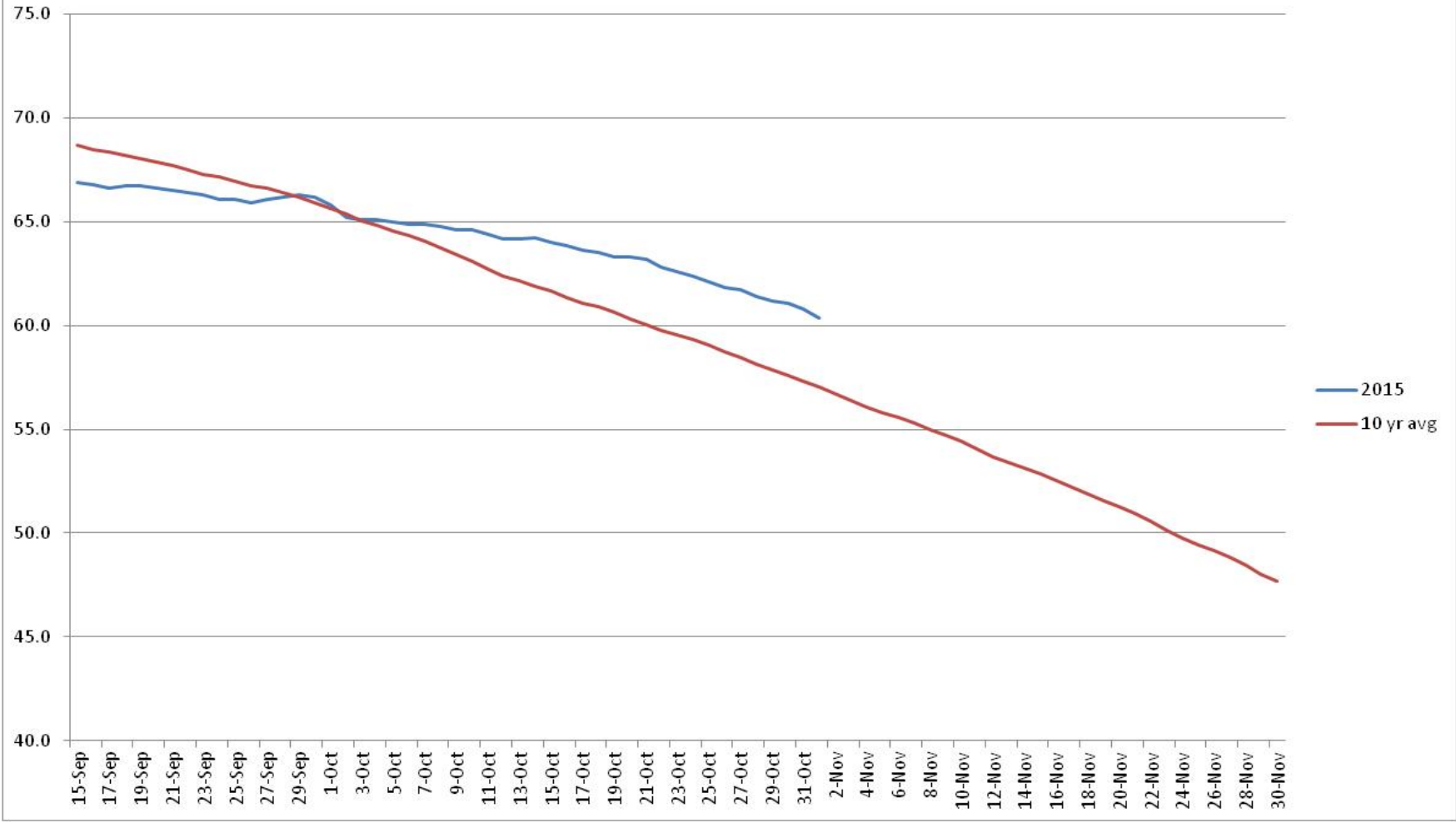
Proposal by PSMFC to install Adult PIT antennas at both JD Fishways is at the design/PDT level.

Kevin Moynahan
OPM John Day/Willow Creek Project

Date: December 12, 2015

MOYNAHAN, KEVIN, PATRICK, 1393959157
E-Signed by MOYNAHAN, KEVIN, PATRICK, 1393959157
VERIFY authenticity with Approval

John Day TW Temperature



JDA Collection Channel Velocity

Date 24-Oct-15

By: pete

Bay(s)	Time	Sec.	Velocity (f/s)
0-2	1:27	87	2.07
2 - 4	2:28	148	2.95
4 - 6	3:31	211	2.86
6 - 8	4:32	272	2.95
8 - 10	5:32	332	3.00
10 - 12	6:31	391	3.05
12 - 14	7:30	450	3.05
14 - 16	8:29	509	3.05
16 - 18	9:10	550	4.39
			3.04

JDA Bird Counts: 12/6/15 to 12/12/15

F(1): Forage AM survey F(2): Forage PM Survey NF(1): Non-Forage AM Survey NF(2): Non-Forage PM Survey

Date	Zone	Gulls				Cormorant				Caspian tern				White Pelican				Grebe				Total
		F(1)	F(2)	NF(1)	NF(2)	F(1)	F(2)	NF(1)	NF(2)	F(1)	F(2)	NF(1)	NF(2)	F(1)	F(2)	NF(1)	NF(2)	F(1)	F(2)	NF(1)	NF(2)	
6-Dec	PHFB	0	0	117	0	0	0	0	0	0	0	0	0	0	0	0	0	0	0	0	0	117
6-Dec	SWFB	0	0	117	0	0	0	0	0	0	0	0	0	0	0	0	0	0	0	0	0	117
6-Dec	PH1	13	0	0	0	4	0	0	0	0	0	0	0	0	0	0	0	0	0	0	0	17
6-Dec	PH2	0	0	0	0	0	0	0	0	0	0	0	0	0	0	0	0	0	0	0	0	0
6-Dec	PH3	0	0	0	0	0	0	0	0	0	0	0	0	0	0	0	0	0	0	0	0	0
6-Dec	SW1	0	0	0	0	0	0	0	0	0	0	0	0	0	0	0	0	0	0	0	0	0
6-Dec	SW2	0	0	0	0	0	0	0	0	0	0	0	0	0	0	0	0	0	0	0	0	0
6-Dec	SW3	0	0	0	0	0	0	0	0	0	0	0	0	0	0	0	0	0	0	0	0	0
Avg/Survey		7		117		2		0		0		0		0		0		0		0		251
7-Dec	PHFB	0	0	0	0	0	0	0	0	0	0	0	0	0	0	0	0	0	0	0	0	0
7-Dec	SWFB	0	0	0	0	0	0	0	0	0	0	0	0	0	0	0	0	0	0	0	0	0
7-Dec	PH1	0	0	0	0	0	0	0	0	0	0	0	0	0	0	0	0	0	0	0	0	0
7-Dec	PH2	0	0	0	0	0	0	0	0	0	0	0	0	0	0	0	0	0	0	0	0	0
7-Dec	PH3	0	0	0	0	0	0	0	0	0	0	0	0	0	0	0	0	0	0	0	0	0
7-Dec	SW1	0	0	0	0	0	0	0	0	0	0	0	0	0	0	0	0	0	0	0	0	0
7-Dec	SW2	0	0	0	0	0	0	0	0	0	0	0	0	0	0	0	0	0	0	0	0	0
7-Dec	SW3	0	0	0	0	0	0	0	0	0	0	0	0	0	0	0	0	0	0	0	0	0
Avg/Survey		0		0		0		0		0		0		0		0		0		0		0
8-Dec	PHFB	0	0	0	0	0	0	0	0	0	0	0	0	0	0	0	0	0	0	0	0	0
8-Dec	SWFB	0	0	0	0	0	0	0	0	0	0	0	0	0	0	0	0	0	0	0	0	0
8-Dec	PH1	0	0	0	0	0	0	0	0	0	0	0	0	0	0	0	0	0	0	0	0	0
8-Dec	PH2	0	0	0	0	0	0	0	0	0	0	0	0	0	0	0	0	0	0	0	0	0
8-Dec	PH3	0	0	0	0	0	0	0	0	0	0	0	0	0	0	0	0	0	0	0	0	0
8-Dec	SW1	0	0	0	0	0	0	0	0	0	0	0	0	0	0	0	0	0	0	0	0	0
8-Dec	SW2	0	0	0	0	0	0	0	0	0	0	0	0	0	0	0	0	0	0	0	0	0
8-Dec	SW3	0	0	0	0	0	0	0	0	0	0	0	0	0	0	0	0	0	0	0	0	0
Avg/Survey		0		0		0		0		0		0		0		0		0		0		0
9-Dec	PHFB	0	0	0	0	0	0	0	0	0	0	0	0	0	0	0	0	0	0	0	0	0
9-Dec	SWFB	0	0	0	0	0	0	0	0	0	0	0	0	0	0	0	0	0	0	0	0	0
9-Dec	PH1	0	0	0	0	0	0	0	0	0	0	0	0	0	0	0	0	0	0	0	0	0
9-Dec	PH2	0	0	0	0	0	0	0	0	0	0	0	0	0	0	0	0	0	0	0	0	0
9-Dec	PH3	0	0	0	0	0	0	0	0	0	0	0	0	0	0	0	0	0	0	0	0	0
9-Dec	SW1	0	0	0	0	0	0	0	0	0	0	0	0	0	0	0	0	0	0	0	0	0
9-Dec	SW2	0	0	0	0	0	0	0	0	0	0	0	0	0	0	0	0	0	0	0	0	0
9-Dec	SW3	0	0	0	0	0	0	0	0	0	0	0	0	0	0	0	0	0	0	0	0	0
Avg/Survey		0		0		0		0		0		0		0		0		0		0		0

JDA Bird Counts: 12/6/15 to 12/12/15

F(1): Forage AM survey F(2): Forage PM Survey NF(1): Non-Forage AM Survey NF(2): Non-Forage PM Survey

Date	Zone	Gulls				Cormorant				Caspian tern				White Pelican				Grebe				Total
		F(1)	F(2)	NF(1)	NF(2)	F(1)	F(2)	NF(1)	NF(2)	F(1)	F(2)	NF(1)	NF(2)	F(1)	F(2)	NF(1)	NF(2)	F(1)	F(2)	NF(1)	NF(2)	
10-Dec	PHFB	0	0	309	0	0	0	15	0	0	0	0	0	0	0	0	0	0	0	3	0	327
10-Dec	SWFB	0	0	289	0	0	0	0	0	0	0	0	0	0	0	0	0	0	0	0	0	289
10-Dec	PH1	0	0	21	0	6	0	0	0	0	0	0	0	0	0	0	0	0	0	0	0	27
10-Dec	PH2	0	0	0	0	0	0	0	0	0	0	0	0	0	0	0	0	0	0	0	0	0
10-Dec	PH3	0	0	0	0	0	0	19	0	0	0	0	0	0	0	0	0	0	0	0	0	19
10-Dec	SW1	0	0	0	0	1	0	0	0	0	0	0	0	0	0	0	0	0	0	0	0	1
10-Dec	SW2	0	0	0	0	0	0	0	0	0	0	0	0	0	0	0	0	0	0	0	0	0
10-Dec	SW3	0	0	0	0	0	0	0	0	0	0	0	0	0	0	0	0	0	0	0	0	0
Avg/Survey		0	310	4	17	0	0	0	0	0	0	0	0	0	2						663	
11-Dec	PHFB	0	0	7	0	0	0	9	0	0	0	0	0	0	0	0	0	0	0	0	0	16
11-Dec	SWFB	0	0	189	0	0	0	0	0	0	0	0	0	0	0	0	0	0	0	0	0	189
11-Dec	PH1	13	0	16	0	0	0	0	0	0	0	0	0	0	0	0	0	0	0	0	0	29
11-Dec	PH2	1	0	0	0	1	0	0	0	0	0	0	0	0	0	0	0	0	0	0	0	2
11-Dec	PH3	3	0	0	0	0	0	0	0	0	0	0	0	0	0	0	0	0	0	0	0	3
11-Dec	SW1	0	0	0	0	0	0	10	0	0	0	0	0	0	0	0	0	0	0	0	0	10
11-Dec	SW2	0	0	0	0	0	0	0	0	0	0	0	0	0	0	0	0	0	0	0	0	0
11-Dec	SW3	0	0	0	0	0	0	35	0	0	0	0	0	0	0	0	0	0	0	0	0	35
Avg/Survey		9	106	1	27	0	0	0	0	0	0	0	0	0	0						284	
12-Dec	PHFB	0	0	8	0	0	0	0	0	0	0	0	0	0	0	0	0	0	0	0	0	8
12-Dec	SWFB	0	0	231	0	0	0	0	0	0	0	0	0	0	0	0	0	0	0	0	0	231
12-Dec	PH1	14	0	12	0	6	0	0	0	0	0	0	0	0	0	0	0	0	0	0	0	32
12-Dec	PH2	1	0	0	0	2	0	0	0	0	0	0	0	0	0	0	0	0	0	0	0	3
12-Dec	PH3	3	0	0	0	0	0	0	0	0	0	0	0	0	0	0	0	0	0	0	0	3
12-Dec	SW1	0	0	0	0	0	0	0	0	0	0	0	0	0	0	0	0	0	0	0	0	0
12-Dec	SW2	0	0	0	0	0	0	0	0	0	0	0	0	0	0	0	0	0	0	0	0	0
12-Dec	SW3	0	0	0	0	0	0	17	0	0	0	0	0	0	0	0	0	0	0	0	0	17
Avg/Survey		9	126	4	9	0	0	0	0	0	0	0	0	0	0						294	
Totals		Gulls				Cormorant				Caspian tern				White Pelican				Grebe				Total
		F	NF	F	NF	F	NF	F	NF	F	NF	F	NF	F	NF	F	NF	F	NF	F	NF	
Weekly Total		48	1316	20	105	0	0	0	0	0	0	0	0	0	3						1492	
Avg/Survey		3	94	1	8	0	0	0	0	0	0	0	0	0	0						107	

John Day Dam
Avian Zones



John Day Weekly Averages

	Temp:	Secchi:	Fallbacks
Sun	45	6.0	
Mon	45	6.0	
Tue	45	6.0	
Wed	45	6.0	
Thur	44	6.0	
Fri	44	6.0	
Sat	44	6.0	
AVG:	45	AVG: 6.0	AVG
			0
			MAX
			0
			MIN

	NE1	NE2	S.Ent	SE1	N.Ent	JBS Diff	Bay19
Sun	8.1	8.1	1.5	9.1	oos	4.3	1.2
Sun					oos		
Mon	8.1	8.1	1.5	9.0	oos	4.6	1.1
Mon					oos		
Tues	8.2	8.2	1.6	8.6	oos	4.5	1.1
Tues					oos		
Wed	8.1	8.2	1.6	8.7	oos	4.5	1.2
Wed					oos		
Thur	8.1	7.9	1.5	8.8	oos	4.5	1.2
Thur					oos		
Fri	8.0	8.0	1.6	8.9	oos	4.6	1.5
Fri					oos		
Sat	8.2	8.2	1.7	9.9	oos	4.5	1.4
Sat					oos		
AVG:	8.1	8.1	1.6	9.0	oos	4.5	1.2